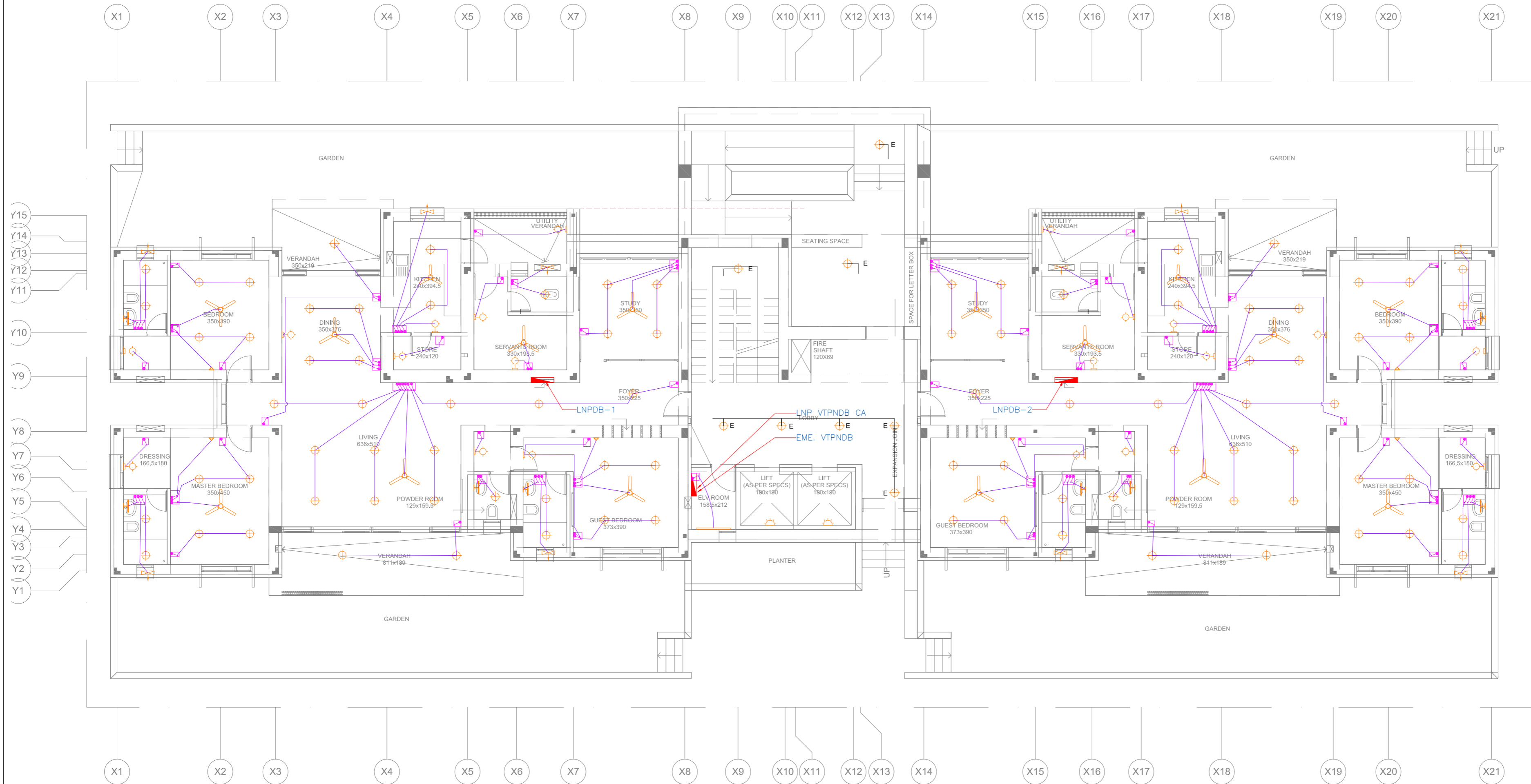


- NOTES**
1. ALL DIMENSIONS SHALL BE CHECKED AND CO-RELATED WITH THE STRUCTURAL DRAWINGS AND ANY AMBIGUITY SHALL BE IMMEDIATELY BROUGHT TO THE NOTICE OF THE ARCHITECT BEFORE COMMENCEMENT OF THE WORK.
  2. ALL DIMENSIONS ARE IN CENTIMETERS UNLESS AND OTHERWISE SPECIFIED.
  3. ALL LEVELS ARE FINISHED LEVELS.
  4. ALL MARGINS, CLEARANCES ETC. REQUIRED AS PER BYE-LAWS SHOULD BE CHECKED AND PROVIDED BY THE CONTRACTOR AND ANY DISCREPANCIES FOUND SHOULD BE IMMEDIATELY BROUGHT TO THE NOTICE OF ARCHITECT BEFORE COMMENCEMENT OF WORK.

**ELECTRICAL LEGEND:**

	WALL MOUNTED LIGHT FIXTURE
	14W. LED LIGHT FIXTURE
	3W. LED MIRROR LIGHT FIXTURE
	EXHAUST FAN.
	1200MM SWEEP OUTLET FOR CEILING FAN.
	LIFT LIGHT
	20W. LED TUBELIGHT
	10W. LED RECESSED LIGHT
	9W. FOOT LIGHT.
	SINGLE POLE SWITCH FOR LIGHTING & FAN AT 1200mm SFL.
	TWO WAY SINGLE POLE SWITCH FOR LIGHTING AT 1200mm SFL.
	FAN REGULATOR AT 1200mm SFL.
	DISTRIBUTION BOARD : 1600mm ABOVE SFL.

NOTE: ALL TOILET LIGHTS SHALL BE 10W. LED RECESSED TYPE.



No.	Date.	Remarks.
Revisions		
Distribution of Prints		
Key Plan		

- Consultants**
- **Structural Consultants**  
VR SHAH Consulting Engineers
  - **Services Consultants**  
  
dbHMS  
2nd Floor, D-62, Sector-2,  
Noida - 201301  
www.dbhms.in
  - **Landscape Consultants**  
Earthscapes Consultancy Pvt Ltd
  - **Road and Pathways Consultants**  
Arhmm Infra Consultants LLP

Project  
**Nalanda University, Rajgir, Bihar**

Title  
GROUND FLOOR PLAN –LIGHTING LAYOUT

FOR TENDER

Dealt : V.K	Drawing No.
Checked : M.T	NUC(1)-FAH-1B-E2.1.2
Scale : 1:75	Approved By: V.M.
Date : 03.06.2016	

**VASTU SHILPA CONSULTANTS**  
Architects | Planners | Urban Designers

'Sangath', Thaltej Road, Ahmedabad - 380054  
Phone: 079 - 27454537 Fax: 079 - 27452006  
www.sangath.org e-mail: vsc@sangath.org

## 2 Ground Floor Plan:Lighting Layout