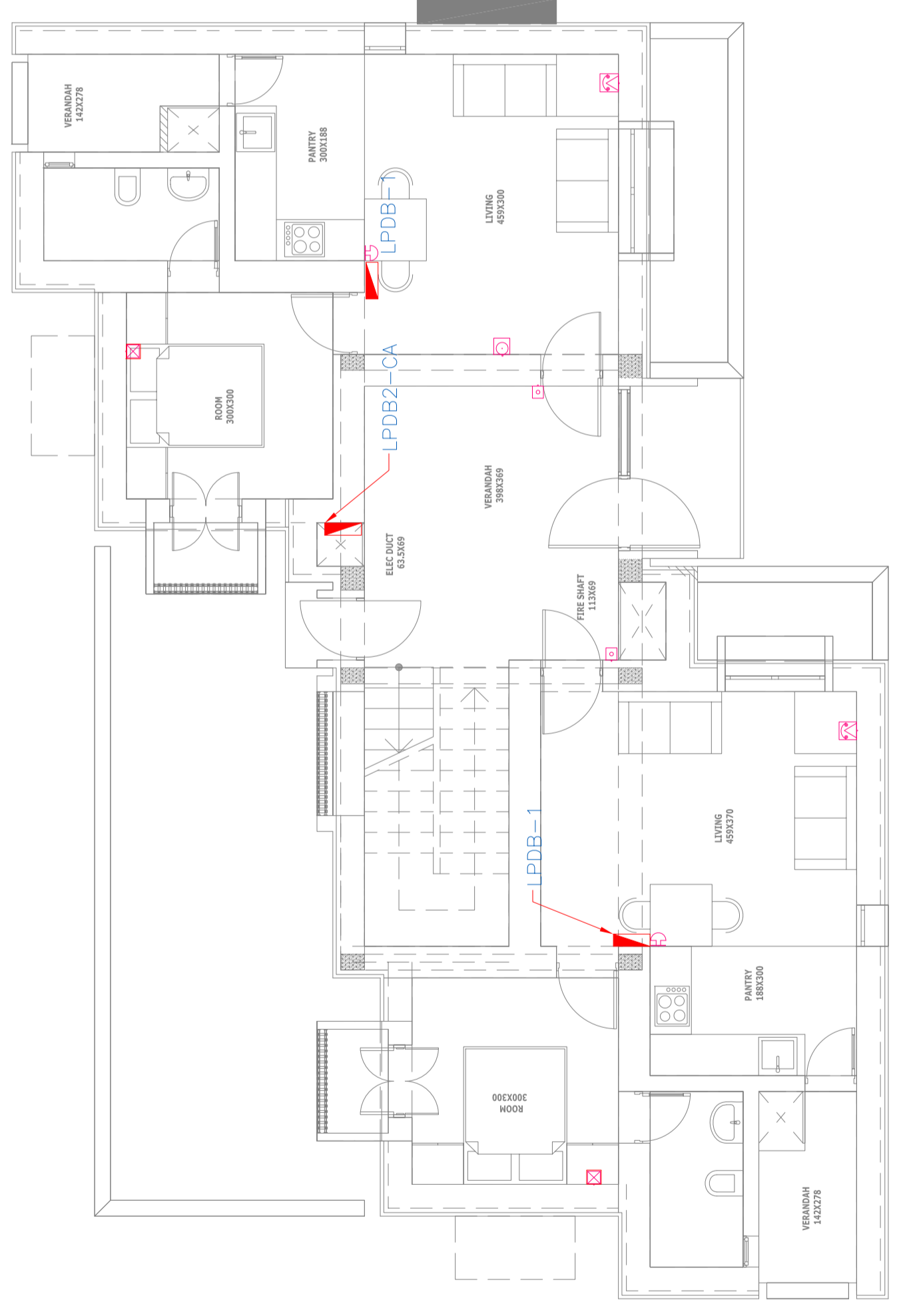


- NOTES**
1. ALL DIMENSIONS SHALL BE CHECKED AND CORRELATED WITH THE ARCHITECTURAL DRAWINGS. ANY DISCREPANCY SHALL BE IMMEDIATELY BROUGHT TO THE NOTICE OF THE ARCHITECT BEFORE COMMENCEMENT OF THE WORK.
  2. ALL DIMENSIONS ARE IN CENTIMETERS UNLESS AND OTHERWISE SPECIFIED.
  3. ALL LEVELS ARE FINISHED LEVELS.
  4. ALL MARGINS, CLEARANCES ETC. REQUIRED AS PER BY-LAWS SHOULD BE CHECKED AND PROVIDED BY THE ARCHITECT. ANY DISCREPANCY SHALL BE IMMEDIATELY BROUGHT TO THE NOTICE OF ARCHITECT BEFORE COMMENCEMENT OF THE WORK.
  5. FOR DETAILS OF WORKS IN STAIRS AND BEAMS REFER SERVICES CONSULTANTS DRAWINGS.
  6. FOR STAIRCASE DETAILS REFER DRAWING NO. S.1
  7. FOR TOILET DETAILS REFER DRAWING NO. 6.1
  8. FOR DOOR DETAILS REFER DRWG NO. 8.1
  9. FOR WINDOW DETAILS REFER DRWG NO. 8.1
  10. FOR KITCHEN + PANTRY DETAILS REFER DRWG NO. 10.1
  11. FOR MISCELLANEOUS DETAILS REFER DRAWING NO. 20.1
  12. FOR VERANDAH DETAILS REFER DRAWING NO. 31.1

**ELECTRICAL LEGEND:**

	WALL MOUNTED LIGHT FIXTURE : 2600mm AFF AT KITCHEN 2500mm AFF AT ENTRANCE FOYER 2200mm AFF AT OTHER PLACES
	14W. LED LIGHT FIXTURE
	10W. LED LIGHT FIXTURE
	9W. FOOT LIGHT
	3W. LED MIRROR LIGHT FIXTURE
	EXHAUST FAN.
	OUTLET FOR CEILING FAN.
	LIFT LIGHT
	TUBELIGHT
	SINGLE POLE SWITCH FOR LIGHTING & FAN AT 1200mm SFL.
	FAN REGULATOR AT 1200mm SFL.
	6A 3PIN SWITCHED SOCKET OUTLET.
	16A 6PIN SWITCHED SOCKET OUTLET.
	6/16A 6PIN SWITCH SOCKET OUTLET.
	TELEPHONE SOCKET OUTLET AT 625mm SFL. (TWIN JACK POINT FOR INTERCOM.)
	CONDUIT PROVISION FOR DATA WITH DUMMY PLATE AT 625mm SFL. IN ALL ROOMS
	TV AERIAL SOCKET OUTLET AT 625mm SFL.
	CALL BELL POINT AT 2600mm SFL.
	BELL PUSH AT 1200mm SFL.
	DISTRIBUTION BOARD : 1600mm ABOVE SFL.



No.	Date.	Remarks.

Date	Prints Issued to	Date	Prints Issued to

Distribution of Prints

Key Plan

- Consultants**
- **Structural Consultants**  
VR SHAH Consulting Engineers
  - **Services Consultants**  
dBHMS  
2nd Floor, D-62, Sector -2,  
Noida - 201301  
www.dbhms.in
  - **Landscape Consultants**  
Earthscapes Consultancy Pvt.Ltd
  - **Road and Pathways Consultants**  
Animm Infra Consultants LLP

Project

**Nalanda University, Rajgir, Bihar**

Title

**GROUND FLOOR PLAN -  
ELV LAYOUT  
FOR TENDER**

Drawn : V.K.  
Checked : M.T.  
Scale : 1:50  
Date : 06.06.2016  
Appd By : V.M.

**VASTU SHILPA CONSULTANTS**  
Architects | Planners | Urban Designers

"Sangathi", Thalaj Road, Ahmedabad - 380054  
Phone: 079 - 27454537 Fax: 079 - 27452006  
www.sangathilpa.org e-mail: vsc@sangathilpa.org

**GROUND FLOOR PLAN - ELV LAYOUT**

**3**

